



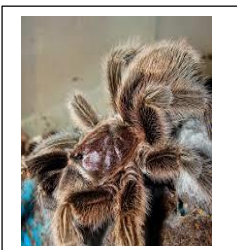
Goose Tracks

Construction has BEGUN!

The long awaited construction of the new Nature Center has begun. Earlier this spring, the contract for our new building was awarded to Bette & Cring, a construction company out of the Watertown area. At the end of June, groundbreaking had begun. Construction is proceeding at a steady rate and we hope to see the exterior portion of the building up before winter. Due to the work, our Upper Loop Trail will be temporarily off limits. The Lower Loop can still be accessed by an alternate entrance about a quarter mile past the construction on Robinson Bay Road. Look for updates for the upcoming winter season. Exciting times are ahead!

RIP Rosey

This summer we had to say goodbye to our tarantula, Rosey. We purchased her in 1999 or 2000 and since that time she has been through many moves. After the fire in 2010, she lived with Linda for about 8 months, and then moved into the Nature Center work trailer. That fall she moved to the Massena High School for the school year. She spent the next summer at the Nature Center office and the last couple of years could be found in the classroom of Michele Porcaro, Jefferson Elementary, during the school year. She had long life with us and I know will be missed by many. Goodbye Rosey!



We're on-line:

www.massenanaturecenter.org

Facebook:

Friends of the Robert Moses State Park Nature Center, Inc.

First Annual Member's Picnic

On August 15th, the Friends hosted their first annual member's picnic. It was a big success and we hope to have even more participants next year. This year we invited not only present members but also past members and those who may wish to become members. Hamburgers and hotdogs with all the fixings were provided by the Nature Center and many others brought a dish to share. All the food was delicious.

Riddle of the day:

How do you get down off an elephants back? (answer on page 3)

Recipes for a Snowy Day

How do you keep busy on a cold winter day without electronics? Make your own Hot Cocoa, that's how!

- 1 cup Milk (of choice)
- 2 Tbls Cocoa Powder
- 1-2 Tbls Sugar
- ¼ tsp vanilla
- Pinch of salt

Whisk cocoa, salt, sugar and 2 Tbls of the milk in a saucepan on medium heat until dissolved. Add milk, heat until hot, add vanilla and top with whipped cream or a marshmallow.

Enjoy!

NATURE CENTER STAFF:

Linda Beslo
Interim Director
Recreation & Education
Specialist

Joel Danko
Program Specialist
Tanya Spicer
Program Specialist

FRIENDS BOARD OF DIRECTORS:

Rick Marshall
President
Miriam Morrow
Vice President
Mac Shoen
Treasurer
Betty Robillard
Secretary

Trustees
Ross Violi
Barb Taylor
Randy Freiman
Martha Duchscherer
Tony Perry
Lisa Gustafsen



Educator's Corner

Summer is coming to a close and the annual migration of the American eel is also about to end. Many people know of the eel, but few know of its incredible life cycle and journey. All American eels (and European eels for that matter) are born in the Sargasso sea, an area of the Atlantic ocean near Bermuda.

They migrate up the coast and into our inland rivers as glass eels. The eels will even cross land on rainy nights. 15-20 years later they will embark on their final journey back to the ocean to breed once and die. During this journey they transform into silver eels and do not eat for the rest of their lives. In recent years the population of eels has decreased due to over-harvesting and power dam turbine strikes. If you catch an eel in our rivers please release her unharmed. It is almost certainly a female as all the males stay on the coasts. She has made a long trip and her species is in peril.

-Joel-

School Programming

It is business as usual for the staff at the Nature Center. All off site programs are still available and we will even be offering snowshoeing at your school. We can bring our snowshoes with us and show your students how fun this winter activity can be along with a little history. Programs are free and we will travel to bring them to you. If you are more than 20 miles from us, we ask that you schedule at least 2 classes and as many as 4 for the day. Our turtles do not travel from December through March as it is too cold out to bring them outside. Call 315-705-5022 to schedule now!

Do you know your State Flower?

In 1955 New York State designated the Rose as the State Flower. Roses come in a variety of colors, shapes and sizes, but it doesn't matter which one you choose, they are all considered the New York State flower. The rose is a fragrant flower with soft petals and sharp thorns on its stem. *"That which we call a rose by any other name would smell as sweet"* William Shakespeare

JUNIOR CITIZEN SCIENTISTS!!!

Junior Citizen Scientist will continue to meet the last Saturday of each month, from 1pm to 2:30pm. Summer has seen a drop in attendance but we are hoping with the beginning of the school year and cooler weather that our programs will become popular once again. Due to the Holidays, we will not be meeting in November or December. Check our website for details and let us know if your child will be attending.

Ages 5-12 are welcome!
Adults are more than welcome to stay.



SPECIAL PROGRAMS SCHEDULED:

September:

- Sat. 12th Massena Library 10-11am
Brasher Library 1-2pm
- Sat. 19th Fall Swamp School 1pm-3pm
- Sat. 26th Wildlife Festival
Junior Citizen Scientist -1pm-2:30pm

October:

- Sat. 3rd Massena Harvest Festival
- Sat. 10th Wellsley Island Harvest Festival
- Sat. 17th Massena Library 10-11am
Brasher Library 1-2pm
- Sat. 24th Explore Fall Walk 10am-11am
- Sat. 31st Junior Citizen Scientist 1pm-2:30pm

November:

- Sat. 7th Paint on Slate 10am-12pm
- Sat. 14th Massena Library 10-11am
Brasher Library 1-2pm
- Sat. 21st Harvest Paper Bag Basket 10am -12pm
- Sat. 28th No Junior Citizen Scientist

December:

- Sat. 5th Soap Carving for Kids- Christmas tree
10am-12pm
- Sat. 12th Massena Library 10-11am
Brasher Library 1-2pm
- Sat. 19th Make your own gift bags and boxes
10am-12pm

- Programs are subject to change
- Please check our website for up to date information and location.

Nature is infinitely creative. It is always producing the possibility of new beginnings.

Marianne Williamson

Summer at the Beach

Ducks, geese, terns and gulls. You name it and this water bird has probably made an appearance at Barnhart Beach this summer.

Wind, rain and plenty of sunshine.

Kites flying, fishing and sand castles being made. Swimming, boating, kayaking or just having a picnic. It was a great place to be for the summer and we are grateful for a place to call a temporary home.

But now that summer has come to a close, the Nature Center office will be moving to the St. Lawrence Center Mall. We will be holding some of our special programs at this location, so keep an eye out for them.

Answer to the Riddle of the day
Answer: You don't, you get down off a duck's back!!

BECOME A FRIEND

Fill out the form below (or print it from our website) and mail it into us along with your donation. All donations are tax-deductible. Need a receipt for tax purposes? Let us know!

We are looking for those who might be interested in volunteering for various positions and anyone who may be interested in joining the board of directors. Let us know and we can help you get started.

Please make checks payable to:
The Friends of the RMSP Nature Center, Inc.

WHY BECOME A FRIENDS MEMBER

Becoming a "Friends" member not only shows your support for our mission but our programming as well.

In 2015 new members, returning members and lifetime members will receive a newly designed membership card. Incentives will become available in 2015, such as window clings and a members only get together.

Check it out!

MEMBERSHIP/DONATION FORM:

- \$5 Individual
- \$10 Family
- \$20 School Class/Club
- \$25 Business
- \$100 Lifetime
- Just a donation

Name:

Address

Email:

Phone:

The Friends of the RMSP Nature Center, Inc.
19 Robinson Bay Road
PO Box 408
Massena, NY 13662



**PRESORTED
STANDARD**

US Postage Paid
Massena, New York
13662
Permit # 3

***ADDRESS CORRECTION
REQUESTED***